



# Remote Deposit Capture

Panini I:DEAL



## Hardware Installation Manual

## Contents

Introduction.....	1
Installation Guidelines for Scanners .....	2
System Requirements.....	2
Additional Requirements .....	2
Required User Privileges and Securities for Installation .....	3
Scanner Information .....	4
Items Included with the Scanner .....	4
Setting up a Scanner for Installation .....	4
Recommended Configuration for Internet Explorer .....	5
Compatibility Mode (IE 8 Only).....	14
Remote Deposit Capture Scanners.....	15
Installing the Panini I:Deal Scanner for Remote Deposit .....	15
Verifying the Installation of the Panini I:Deal Scanner .....	16
Uninstalling the Panini I:Deal Scanner.....	16

## Introduction

The *Hardware Installation Manual* provides step-by-step instructions for the installation of all supported scanners. This manual, in conjunction with the Operator Manual included with the scanner, should provide all the instructions necessary for a successful installation.

The *Hardware Installation Manual* includes:

- Microsoft® Internet Explorer® configuration common to the installation of all scanners.
- Installation instructions specific to each type of scanner.
- Un-install instructions specific to each type of scanner.

---

**NOTE:** Scanner installations are documented using Microsoft® Windows® 7 Enterprise 32-bit operating system and Internet Explorer 8 unless otherwise noted. Some steps and wording may vary slightly if you have a different operating system.

---

For any additional questions or concerns not addressed by this document, please contact your first route of Customer Support for assistance.

# Installation Guidelines for Scanners

## System Requirements

In addition to a high-speed Internet connection, the following components are required for working with the EPS application(s).

For Microsoft Windows®:

- Windows Vista (except Starter or Home Basic): IE 8 and 9 or Google Chrome
- Windows 7: IE 8, 9, 10, and 11 or Google Chrome
- Windows 8: IE 10 or Google Chrome
- Windows 8.1, update 1: IE 11 or Google Chrome
- Windows 10 Pro
- Windows 10 Enterprise
- .NET Framework 4.0 or higher

The Current version of Chrome and its two previous versions are supported.

## Additional Requirements

The table below lists general requirements for a successful scanner installation.

Requirement Type	
RAM	2 Gigabytes or greater.
Updates	All current critical Windows updates.
Processor	2.4 GigaHertz (GHz) or greater.
Hard Drive space	1.5 Gigabytes or greater.
USB Port	Direct USB 2.0 port (hubs, powered or not, are <b>not</b> supported).
USB Cable	A USB 2.0 Hi-speed cable (included with scanner).
Power Cable	Power cable (included with scanner).
Browser	Internet Explorer is the only supported browser.
.NET	.NET 4.0 Framework for Windows 7
Internet Connection	High-speed Internet connection.
UPS	Uninterruptible Power Supply (UPS) is recommended.

**NOTE:** Not all scanners have been certified for Windows 7 or 64-bit compatibility; verify compatibility before attempting installation.

## Required User Privileges and Securities for Installation

Prior to installation, it may be necessary to temporarily disable anti-virus, firewall, or other Internet security software. Users that will be installing scanner drivers must have Administrative rights to that PC.

---

**NOTE:** Some PC security settings may change during installation.

---

In Microsoft Windows Vista and Windows 7, a PC may be running User Account Control (UAC). If a PC has UAC enabled, the system may prompt for additional steps during the installation process. Additionally, if a PC currently has UAC enabled, the user may have to run Internet Explorer as an Administrator to successfully install the software.

---

**NOTE:** Users should only have one type of scanner installed at a time.

---

## Scanner Information

### Items Included with the Scanner

Selected scanners include replacement parts and extra extenders. Store these and the box in a safe place. The box and packaging should be kept for warranty purposes. Always keep the Operator's Manual for reference. For the Unisys® SmartSource® Micro Series scanner, you will need to retain the calibration sheets for installation and to re-calibrate the scanner when needed.

### Setting up a Scanner for Installation

1. Remove the scanner and its components from the box and inspect the contents to ensure no items are missing.
2. Place the scanner on a flat surface within 1½ to 6 feet of a PC, preferably not in close proximity to monitors, speakers, or other electronic devices.
  - The scanner should be at least 1½ feet away from other electronic devices but close enough to an electrical outlet.
  - The scanner should not be in direct sunlight.
  - The scanner should be in a place that is convenient to place documents into it with ease.
3. Connect the power cable to the scanner and wall outlet.
4. Connect the USB cord to the back of the PC. At this time, do not connect the other end of the USB cord to the scanner, but instead place it near the back of the scanner.
5. If you are installing the SmartSource Micro Series scanner, retain the calibration sheets for installation and as-needed re-calibration.
  - a. (Optional) For the RDM, Epson CaptureOne, and Digital Check CX30 scanners, open the small box of the franking ink roller and follow the installation instructions.
  - b. (Optional) For the VisionX, TellerScan series, and SmartSource Professional series scanners, open the small box of the ink cartridge and follow the installation instructions if the ink cartridge is for the endorser.

# Recommended Configuration for Internet Explorer

1. Open Internet Explorer, and from the top navigational menu, select **Tools | Internet Options**.

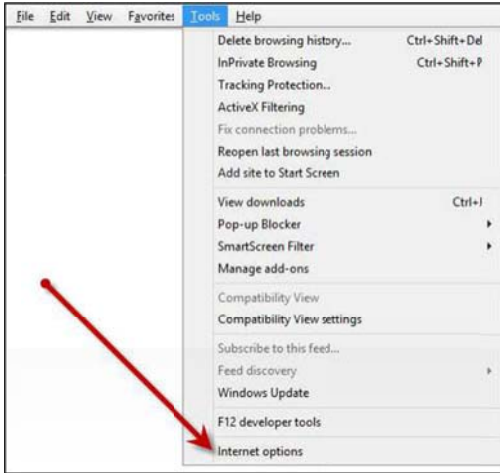


FIGURE 1 - INTERNET OPTIONS

2. The **Internet Options** window appears. From the tabs at the top of the window, select **General**.

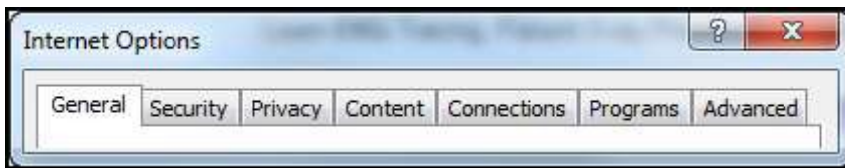


FIGURE 2 - GENERAL TAB UNDER INTERNET OPTIONS

3. Under the section **Browsing history**, select the **Settings** option.

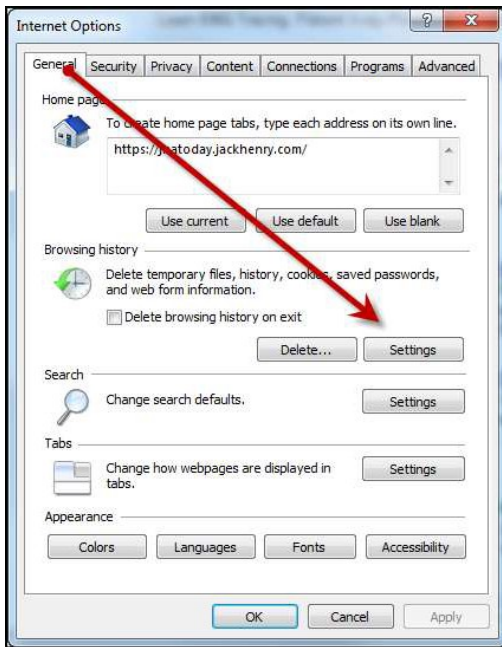


FIGURE 3 - SETTINGS OPTION

4. The **Temporary Internet Files and History Settings** window appears. Under the **Check for newer versions of stored pages** section, select the check box next to **Every time I visit the webpage**. Select **OK** at the bottom to continue.

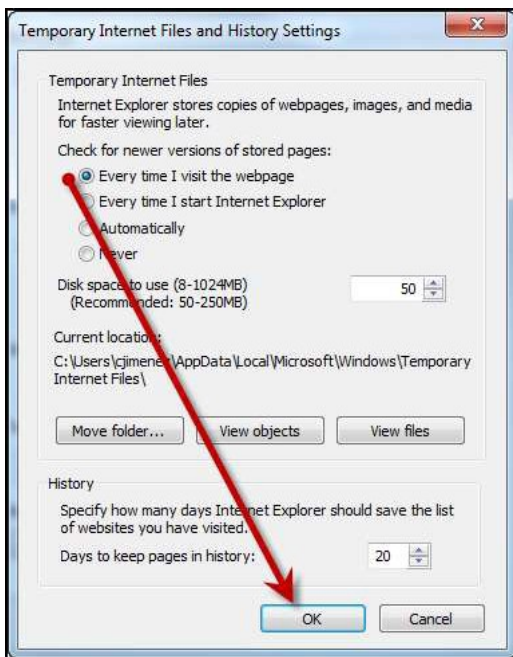


FIGURE 4 - SETTINGS FOR NEWER VERSIONS OF STORED PAGES

5. From the tabs at the top of the **Internet Options** window, select **Security**.



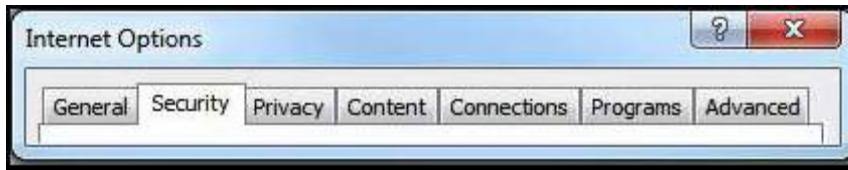


FIGURE 5 - SECURITY TAB UNDER INTERNET OPTIONS

6. Select the **Trusted Sites** icon to activate the **Sites** option. Select **Sites**.



FIGURE 6 - SITES OPTION UNDER TRUSTED SITES CATEGORY

7. The **Trusted sites** window appears. In the **Add this website to the zone** field, enter the URL: <https://ssl.selectpayment.com>, and select the **Add** option.

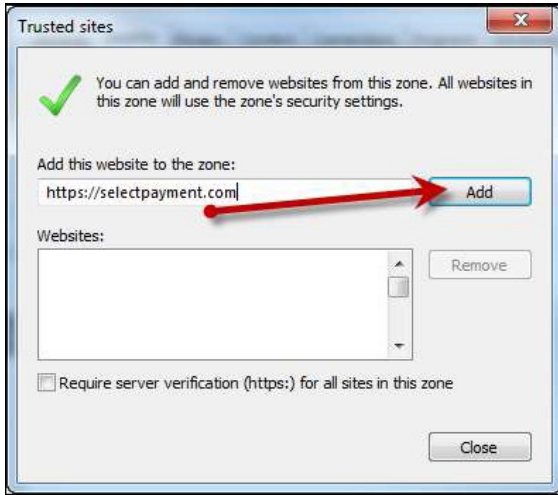


FIGURE 7 - ADDING A TRUSTED SITE

8. Select **Close** at the bottom of the **Trusted sites** window.
9. From the **Internet Options** window with the **Trusted sites** icon selected, select **Custom level**.

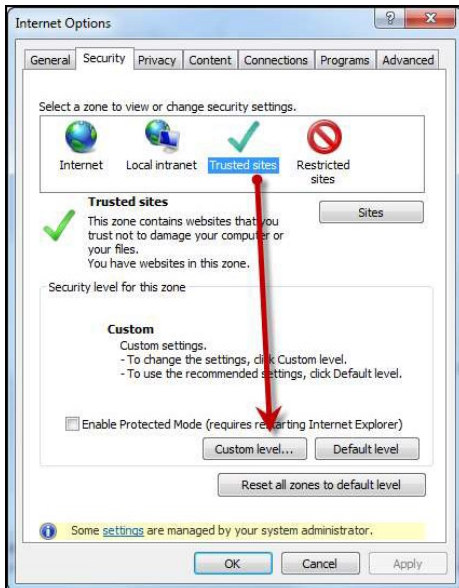


FIGURE 8 - CUSTOM LEVEL OPTION UNDER TRUSTED SITES

10. A list of security settings appears. Select the settings detailed below.
  - a. **Under the heading ActiveX controls and plugins**, the following three options should all be set to **Disable**:
    - i. Display video and animation on a webpage that does not use external media player.
    - ii. Download unsigned ActiveX controls.

- iii. Initialize and script ActiveX controls not marked safe for scripting.
- b. The rest of the options under this heading should be set to **Prompt** (the preferred setting) or **Enabled**.

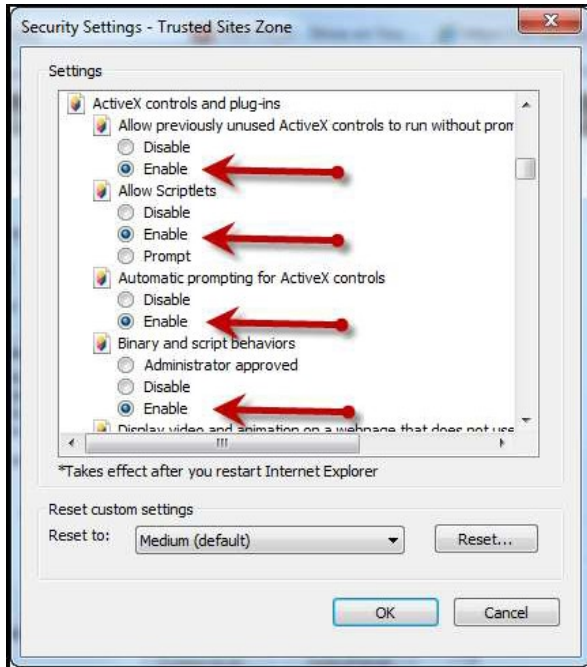


FIGURE 9 - ACTIVEX CONTROLS AND PLUGINS SETTINGS

- c. Under the **Scripting** heading, set **Active scripting** and **Scripting of Java applets** to **Enable**.

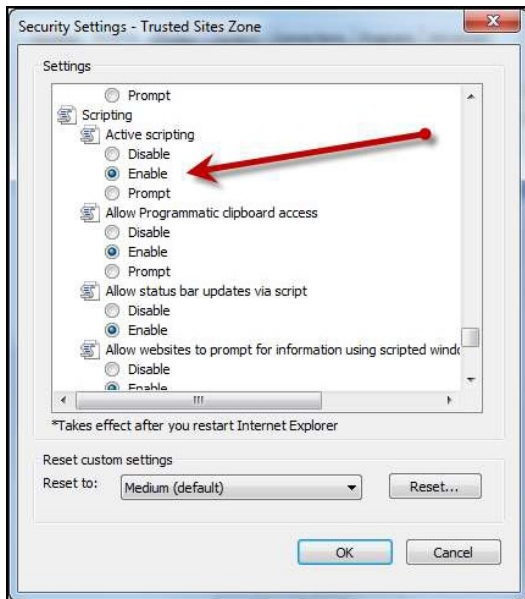


FIGURE 10 - SCRIPTING SETTINGS

11. Select **OK** at the bottom of the window.
12. From the **Internet Options** window, select the **Privacy** tab.

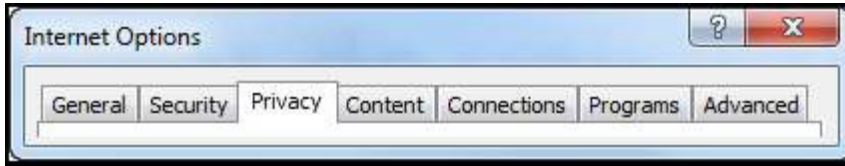


FIGURE 11 - PRIVACY TAB

13. Under the **Pop-up Blocker** section, if the **Turn on Pop-up Blocker** option is checked, continue with this step. If it is unchecked, proceed to the next step.
  - a. Select the **Settings** option.

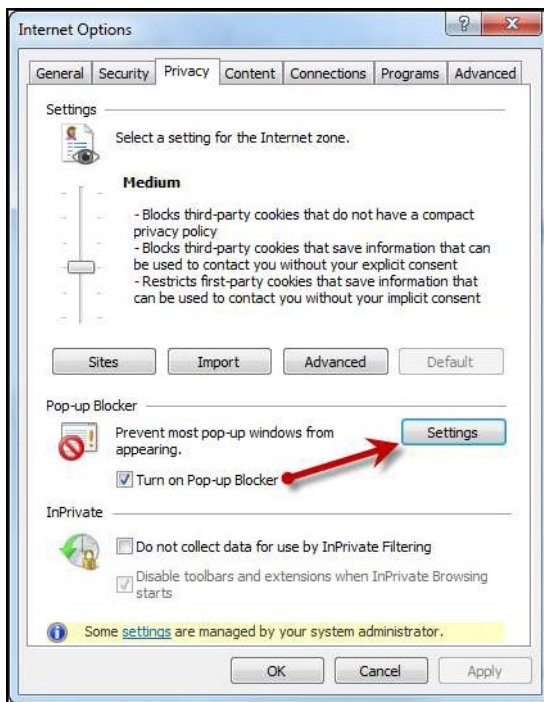


FIGURE 12 - SETTINGS OPTION FOR POP-UP BLOCKER

- b. In the **Address of website to allow** field, enter the URL: <https://ssl.selectpayment.com>, and select **Add**.



FIGURE 13 - ADDING AN ALLOWED WEBSITE UNDER POP-UP BLOCKER SETTINGS

c. Select **Close** to return to the **Internet Options** window.

14. From the **Internet Options** window, select the **Advanced** tab.

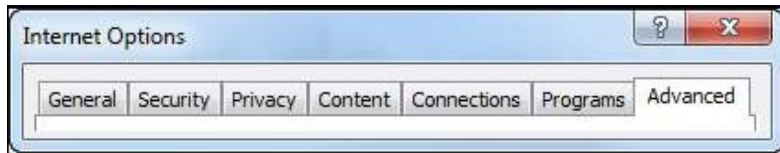


FIGURE 14 - ADVANCED TAB UNDER INTERNET OPTIONS

15. Scroll through the settings to the **Security** section and make sure the check box next to **Do not save encrypted pages to disk** is *not checked*.

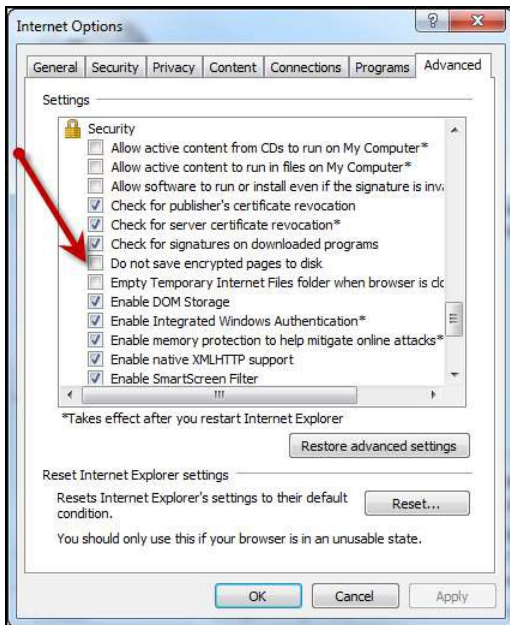


FIGURE 15 - SECURITY SETTING OPTION SET TO UNCHECKED

16. Also under the **Security** section, select the check boxes next to **Use SSL 2.0** and **Use SSL 3.0**.

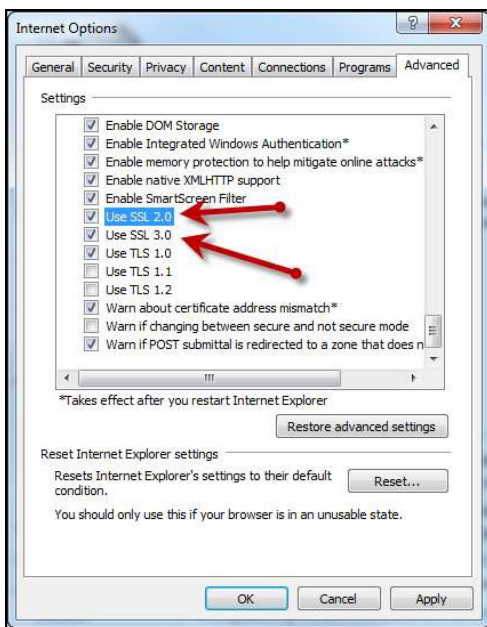


FIGURE 16 - ADDITIONAL ADVANCED SECURITY SETTINGS

17. From the bottom of the **Internet Options** window, select **Apply**.

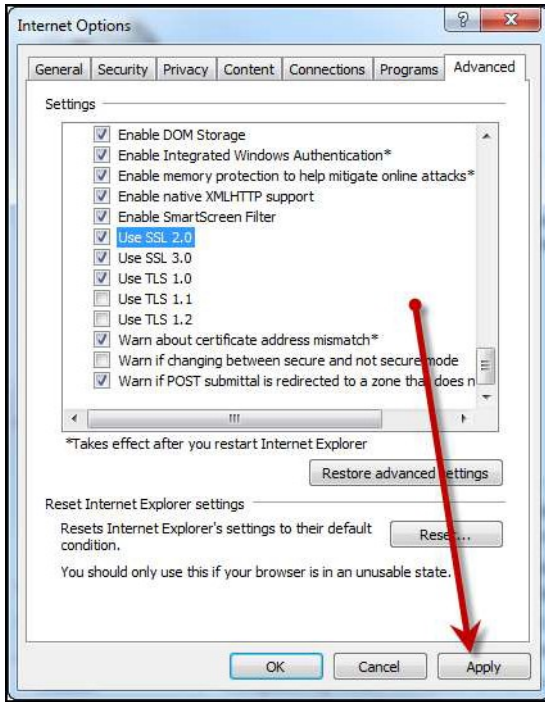


FIGURE 17 - APPLYING ADVANCED SETTINGS

18. Select **OK** to finish.

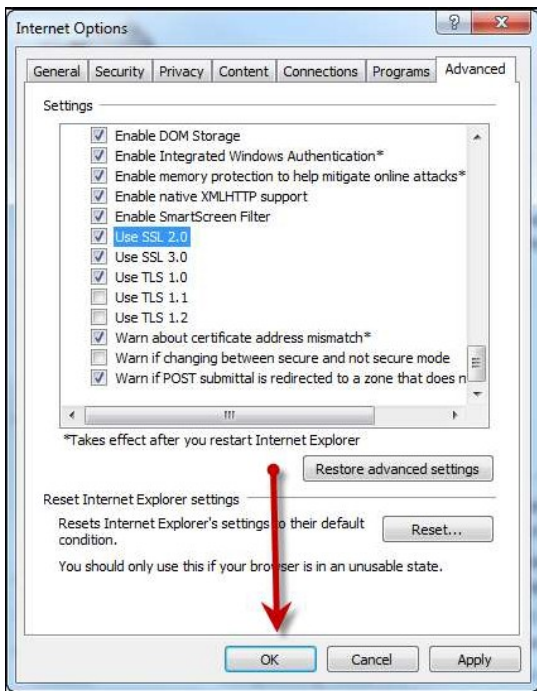


FIGURE 18 - OK OPTION TO FINISH APPLYING SETTINGS

## Compatibility Mode (IE 8 Only)

There are three ways to view a website in compatibility mode with Internet Explorer 8.

- **Option 1:** Open Internet Explorer, and go to <https://ssl.selectpayment.com>. From the browser menu, select **Tools | Compatibility View**.

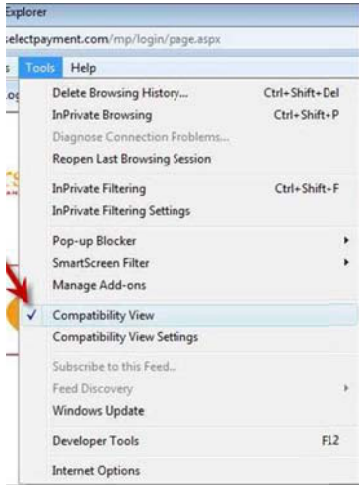


FIGURE 19 - TOOLS OPTION FOR COMPATIBILITY VIEW

- **Option 2:** Select the ripped paper icon to the right of the address bar.



FIGURE 20 - COMPATIBILITY MODE ICON

- **Option 3:** Navigate to <https://ssl.selectpayment.com>, and select **Tools | Compatibility View Settings**. In the **Add this website** field, enter <https://ssl.selectpayment.com>, and select **Add**.

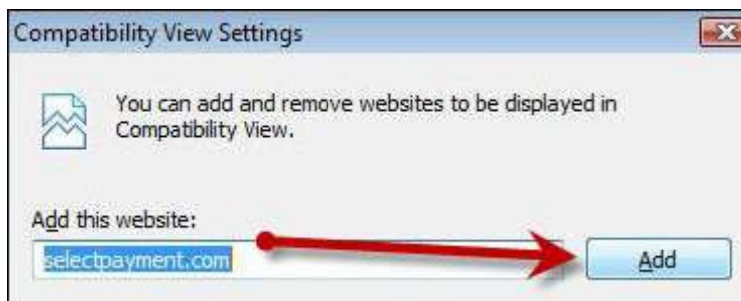


FIGURE 21 - ADDING A WEBSITE TO THE COMPATIBILITY SETTINGS



## Remote Deposit Capture Scanners

### Installing the Panini I:Deal Scanner for Remote Deposit

Use the following instructions to install the drivers for the Panini I:Deal scanner when using it with Remote Deposit Capture.

Do **not** plug the USB cable into the scanner until the installation is complete. Please verify that Internet Explorer has been updated to the recommended settings. See the “Recommended Configuration for Internet Explorer” section of this document for more information.

---

**NOTE:** If ActiveX permissions are set to enable, prompts may not appear as described in this document. Certain sections will automatically install, instead.

---

1. Log in to Remote Deposit Capture as the PC administrator, and select the **Transactions** tab from the top of the page.

---

**NOTE:** This process may require the IT department to disable anti-virus and/or firewall.

---

2. From the left navigational bar, select **Remote Deposit with Ideal**.
3. Select **Start the Installation**.
4. The ActiveX installation will begin. This may appear as an information bar at the top of the page, which states: *This Website wants to install the following add-on: 'RDC\_x85x64\_VisionAPI' from 'JACK HENRY & ASSOCIATES, INC.'. If you trust the website and the add-on and want to install it, click here...*
5. Select the information bar and click **Install This Add-on for All Users on This Computer**.
6. Wait for the page to load and another option will appear. This option may appear as a security warning pop up, which states: *Do you want to install this software? Name: RDC\_x86x64\_VisionAPI.*
7. Select **Install**.
8. An InstallShield Wizard appears for the installation of **Profit Stars RDC – Panini VisionAPI**.
9. Select **Next**.
10. Ensure that all users who will be working with this computer are selected on the **Customer Information** screen. Select **Next**.
11. A begin the installation window will appear. Select **Install**.
12. The software will begin the installation, and various windows will appear and disappear.
13. An InstallShield Wizard appears for the install of **Panini 3.6.2 Universal Installer**. Select **Next** to continue.

14. Select **Next**.
15. Select **Next**.
16. Select **Finish**.
17. Select **Finish**.
18. A message appears, stating: *The installation has completed. In order for changes made to your web browser to take effect, your web browser session must be restarted. Exit the browser and open a new session.* Select **OK** to continue.
19. Log out of Remote Deposit Capture, and close Internet Explorer.
20. Open a new Internet Explorer session, and log in to Remote Deposit Capture.
21. From the top of the page, select the **Transactions** tab.
22. From the left navigational bar, select the **Remote Deposit with Panini I:Deal** option. The scanner will initialize and navigate to the *Open Deposits* page. The installation is complete.

---

**NOTE:** For continued accuracy and dependability, adhere closely to all maintenance and service requirements described in the materials received with the scanner.

---

## Verifying the Installation of the Panini I:Deal Scanner

Use the following instructions to verify the Panini I:Deal scanner installation was successful.

1. The I:Deal scanner will display in the **Device Manager** under **Panini** as **I-Deal** and **Panini USB Driver**.
2. The Installation will display in **Add or Remove Programs** in the **Control Panel** as **Profit Stars RDC – Panini VisionAPI** and **Panini 3.6.2 Universal Installer**.

## Uninstalling the Panini I:Deal Scanner

Use the following instructions to uninstall the Panini I:Deal scanner drivers from the PC.

3. Right-click **Computer** and select **Properties**.
4. Select the **Device Manager**.
5. Click the ▷ sign next to *Panini*.
6. Right-click **I:Deal** and select **uninstall**.
7. Select **OK**.
8. Right-click **Panini USB Driver** and select **uninstall**.
9. Click **OK**, and disconnect the scanner. Close the **Device Manager**.
10. Close **System Properties**.
11. Select **Start**.
12. Select **Control Panel | Programs and Features**.
13. Click **Panini 3.6.2 Universal Installer**.
14. Select **Uninstall**.



15. Select **Yes**.
16. Select **OK**.
17. Select **Finish**.
18. Select **Profit Stars RDC – Panini VisionAPI**
19. Select **Uninstall**.
20. Select **Yes**.
21. When the uninstall is complete, you may close all open windows.